

# TENNYSON HEIGHTS



# LOCATION:

**2533 Concepcion Aguila St., Quiapo, Manila**

## What's Near?

- ✓ **San Beda College**
- ✓ **San Sebastian Church**
- ✓ **Centro Escolar University**
- ✓ **Technology Institute of the Philippines**
- ✓ **La Concolacion College Manila**
- ✓ **LRT2 Legarda Station**
- ✓ **National Shrine of St. Jude Thaddeus**





# PROJECT DETAILS:

**Delivery Date: Q4 2020**

**8  
Floors**

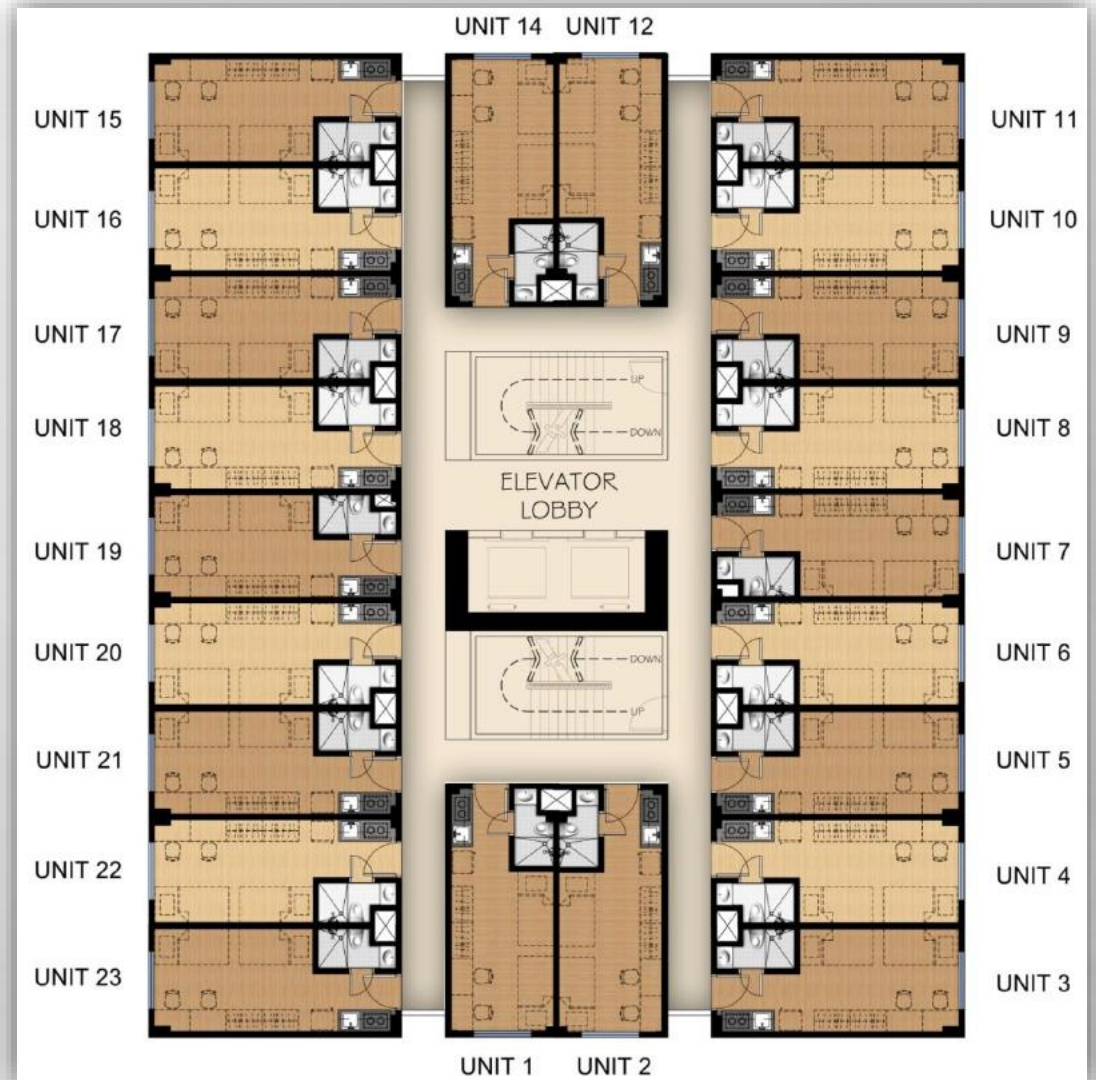
**Ground Floor: Parking/Utilities Area**

**2<sup>nd</sup> to 8<sup>th</sup> Floor: Residential Area**

**Roof Deck: Amenities**



# FLOOR LAY-OUT: RESIDENTIAL AREA



# UNIT LAY-OUT:



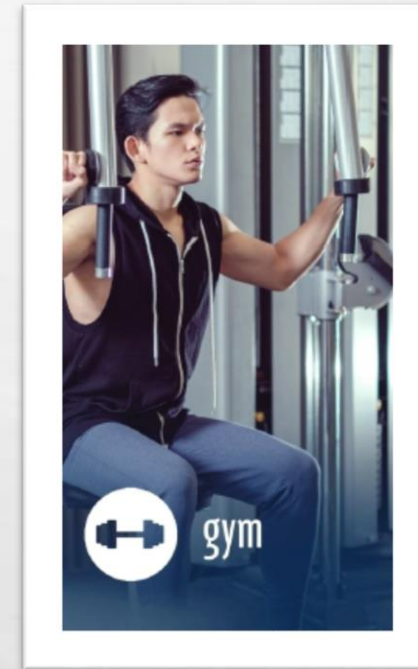
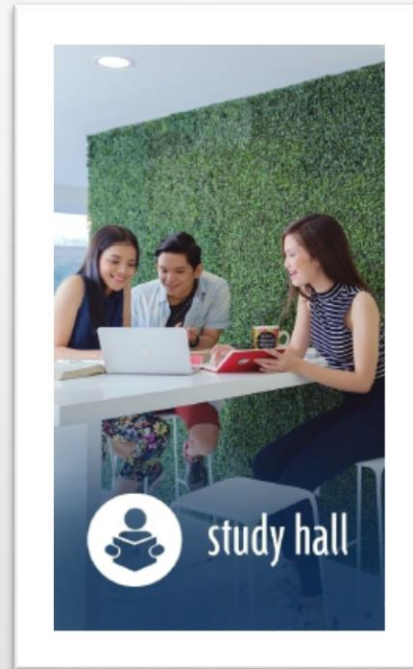
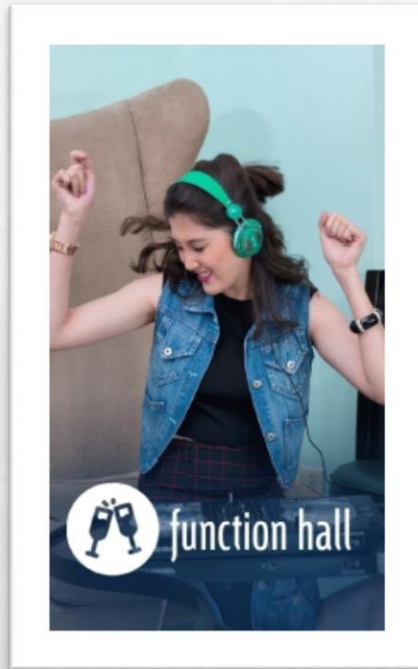
**21 sq.m**



**21.52 sq.m**

# AMENITIES:

---







# FLOOR LAY-OUT: AMENITIES AREA

# **PAYMENT SCHEME:**

**Spot 3%, 22% in 18 months**

**Reservation Fee (Studio): Php 30,000.00**

**Reservation Fee (Parking): Php 10,000.00**

**Promo (Studio): Php 100,000.00**



# MODEL UNIT (VISTA RECTO MODEL UNIT):



# UNIT DELIVERABLES:

---

<b>Kitchen Area</b>	<b>Toilet &amp; Bath</b>	<b>Bedroom Area</b>	<b>Living Area</b>
<ul style="list-style-type: none"><li>• <b>Vinyl Planks</b></li><li>• <b>Painted Wall</b></li><li>• <b>Granite Countertop</b></li><li>• <b>Stainless Sink w/ Faucet</b></li><li>• <b>Base &amp; Overhead Modular Cabinets &amp; Shelves</b></li><li>• <b>Painted Ceiling</b></li><li>• <b>Stub out and Space Provision for Cook Top</b></li></ul>	<ul style="list-style-type: none"><li>• <b>Ceramic Tiles</b></li><li>• <b>Painted Ceiling</b></li><li>• <b>Telephone-type Shower</b></li><li>• <b>Wall-hung Lavatory</b></li><li>• <b>2pc. Tank Type Water Closet</b></li></ul>	<ul style="list-style-type: none"><li>• <b>Vinyl Planks</b></li><li>• <b>Painted Wall</b></li><li>• <b>Painted Ceiling</b></li></ul>	<ul style="list-style-type: none"><li>• <b>Vinyl Planks</b></li><li>• <b>Painted Wall</b></li><li>• <b>Painted Ceiling</b></li></ul>

# **BUILDING DELIVERABLES:**

---

- ENTRANCE LOBBY WITH RECEPTION AND SECURITY COUNTER
- TWO (2) PASSENGER ELEVATORS
- CCTV MONITORING ON SELECTED COMMON AREA
- AUTOMATIC FIRE DETECTOR AND SUPPRESSION SYSTEM
- ANNUNCIATOR PANEL ON ALL FLOORS
- WATER TANK AND WATER CISTERN
- STANDBY POWER GENERATOR FOR COMMON AREA AND SELECTED OUTLET
- MAILBOX AREA